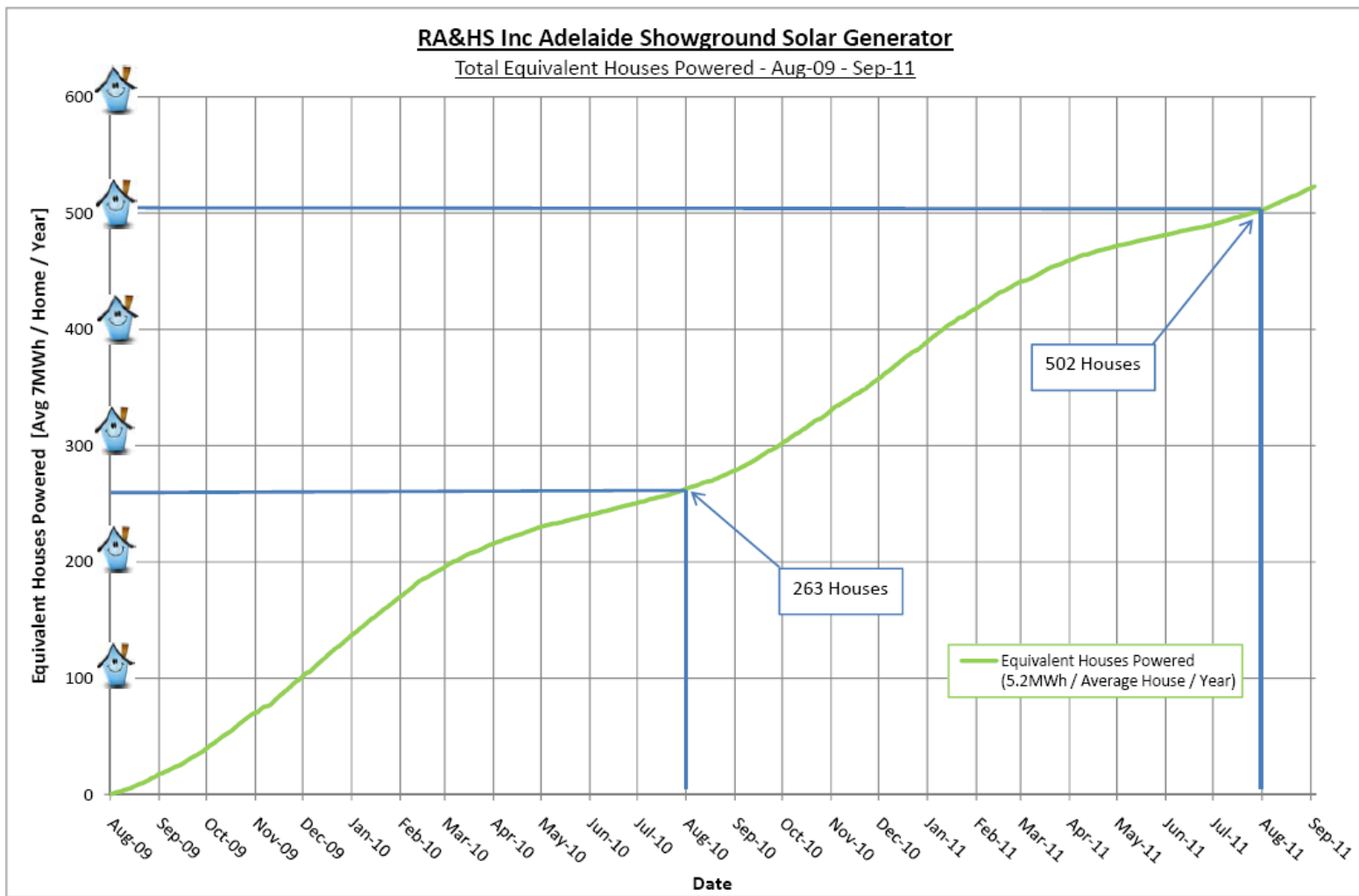


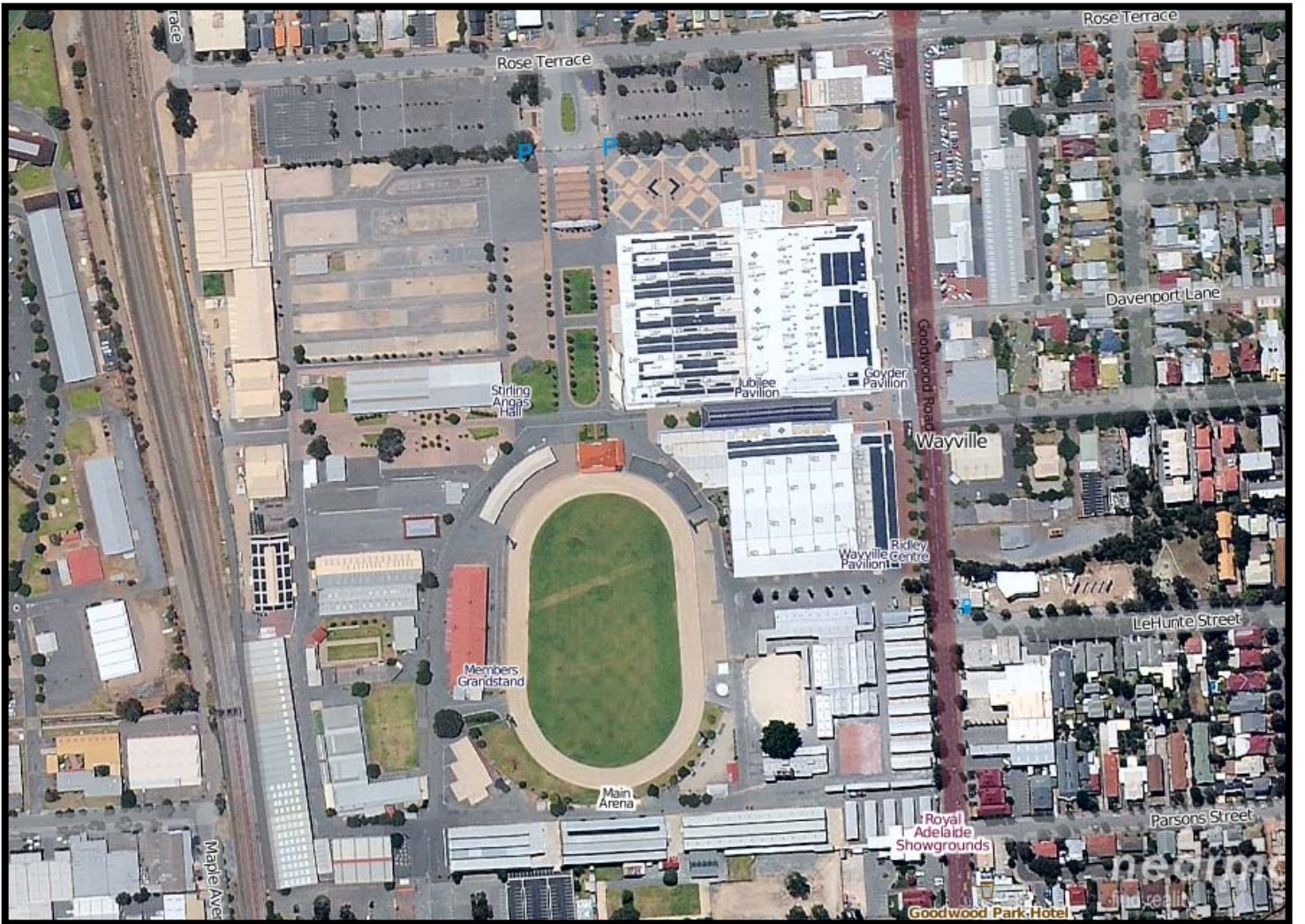
## Adelaide Showground Solar Power Generator

Largest Roof-Mounted Solar Generator in the Southern Hemisphere

Key Facts:

- Total Project Value \$8M AUD
- 12,612 Roof-mounted Thin Film CdTe 77.5 W Solar Panels
- 184 Sub-System Inverters
- Total Roof Area Deployed: 9,239m<sup>2</sup>
- System Output Capacity: 1,000kW
- System Annual Yield: 1,400MWH
- Annual reduction in Greenhouse Gas Emissions: 1,400 Tonnes
- Design Period: 8 Months
- Construction Period: 3 Months
- 11kV interconnection to existing High Voltage Ring Main
- ETSA Utilities Approved 'Large Embedded Generator'
- Providing up to 40% of site annual power usage

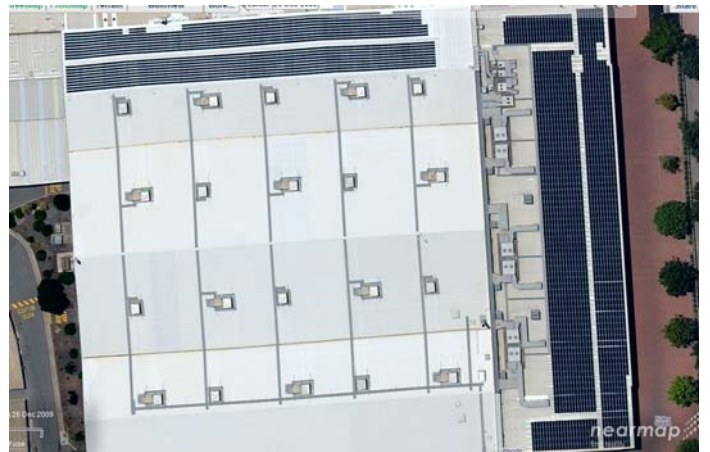




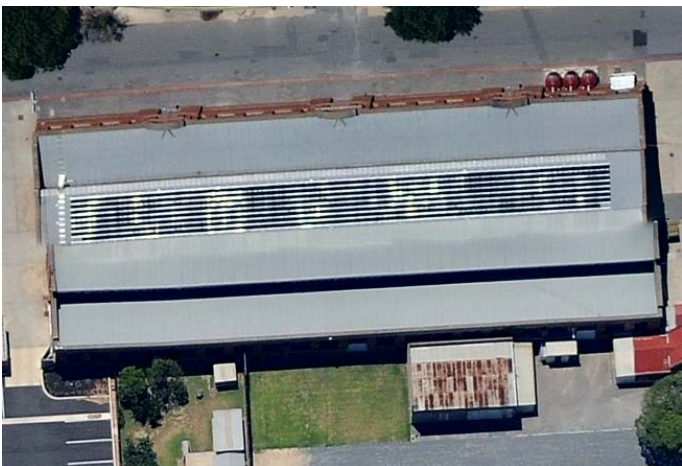
**Adelaide Showground Aerial Site Plan**



**Jubilee & Goyder Pavilions**



**Wayville & Ridley Pavilions**



**Dairy Pavilion**



**Alpaca Pavilion**